

C. Y. Tung International Centre for Maritime Studies



Annual Report 2008-2009



Table of Contents

Chairman's Message	03
Director's Review	04
Introduction	06
Teaching and Learning	10
Quality Research	11
Collaboration and Consultancy	15
Activity Highlights	17
Appendix – Publication and Selected Research Output	20



Opening Ceremony of the C. Y. Tung International Centre for Maritime Studies March 2009



Chairman's Message

It gives me great pleasure to present to you, for the first time since my appointment as chairman of the **C.Y. Tung International Centre for Maritime Studies (C.Y. Tung ICMS)**, its annual report covering the period from July 2008 to June 2009.

The Centre has a clear mandate from the University to establish itself as a world-class centre for maritime research, education and consultancy to better serve the maritime industry and community as a whole. The Centre was engaged in a wide range of activities this past year. In particular, the Centre has made good and tangible progress in areas including applied research, teaching and learning activities, academic and industrial collaborations and networking with academic institutions both local and abroad.

Some notable examples include research initiatives on the Port Benchmarking project which provides evaluation on container ports performance and the Harmful Algae Indexing System which can forewarn the occurrence of red tide. Both have high relevancy to the needs and interests of the industry. Initiated and hosted by the Centre three years running, the International Forum on Shipping, Ports and Airports (IFSPA) provided an ideal platform for local and international academics and practitioners to discuss issues affecting the industry. This is especially relevant at a time when the respective industries face exceptional challenge and flux in uncertain economic times. In addition, the Centre has become the editorial administrator of "Maritime Policy & Management", an international journal of shipping and port research. This new role further strengthens the Centre's position in maritime studies in the industry.

As an institution based in Hong Kong, we believe that Hong Kong will remain as the primary maritime and logistics hubs in Asia. Against a backdrop of keen competition from

nearby regions and a national call for spurring the logistics industry in the Chinese mainland, we must embrace continuous improvement to keep our city competitive and viable. We will continue to work with the Hong Kong Government, the University and the industry groups to play a part in maintaining and enhancing Hong Kong's overall competitiveness. As part of these efforts, the Centre will continue its efforts in maritime related education and training, produce and nurture professionals suitable and necessary for the industry at large.

In our continued quest to become a world-class centre for maritime research, education and consultancy, the Centre will spearhead innovative research initiatives, advance industry knowledge, and promote academics and industrial collaboration. Given the Centre's activities in the Chinese mainland, the Centre is well positioned to further extend collaborative efforts with maritime research and educational institutions on the mainland. The Centre will at all times maintain the PolyU tradition of bridging theory and practice so as to have real and tangible impact on policies and industry practices.

The Centre was established in 2005. It was established with the support of PolyU and The Tung Foundation. The early years of the Centre has provided us with a running start. With the support of the University, the industry and the community at large, I have every confidence that the Centre will continue to be a driving force in the development of maritime studies and management, and make our contribution to the sustainable development of our industry, nation and society.

C C Tung

Chairman, Steering Committee of C.Y. Tung ICMS



Director's Review

This has been a memorable and rewarding year in the development of **C.Y. Tung ICMS**. The renovated Centre with enhanced facilities commenced operations and various initiatives in the defined strategic areas were launched with encouraging results.

The Opening Ceremony of the renovated Centre in March 2009 proved to be the highlight of the calendar. The Centre was renamed in recognition of the late shipping magnate Mr C.Y. Tung's long-term support for the University's maritime education and research and a HK\$10 million benefaction from The Tung Foundation.

On the research frontier, a number of representative projects under the auspices of the Department of Logistics and Maritime Studies and C.Y. Tung ICMS are covered in this report. A highlight of our excellence in applied research and consultancy is the award of the Soft Science Fund by the Shenzhen Bureau of Science Technology and Information, which commissioned the Centre to provide the Shenzhen Government with analyses and strategies on developing modern industries in the area. It was a meaningful attempt for the Centre to expand its partnership with government agencies in the Chinese mainland.

We are glad that the Centre is connected to the world in many ways. In the past year, it actively participated in a host of international conferences and pursued collaboration with academic institutions around the world. It also assumed the administrative role in the academic journal "Maritime Policy & Management" to promote maritime research both locally and internationally.

To keep up with its role of bridging academics to industries, the Centre hosted IFSPA 2009 in May 2009. Our packed programme with 1 Industrial Forum, 3 Academic Keynote Sessions and 16 Parallel Sessions was nourished with brilliant presentations from eminent scholars and industrial practitioners from around the world. The enthusiastic response to the Conference was a great encouragement to us.

In the next few years, with a wide range of cutting-edge research and innovative projects in the pipeline, we will further develop the Centre as a key laboratory to shape new knowledge for integrated transport, logistics and maritime studies and management. We also look forward to more cross-boundary collaboration and exchange for the benefit of the maritime and logistics community of the nation.

Last but not least, I would like to reiterate our gratitude to the unfailing support of The Tung Foundation, our stakeholders and the committed staff making a great year for the Centre.

John Liu

Director of C.Y. Tung ICMS



Mr C.Y. Tung,

a world renowned shipping magnate, devoted a lifetime to the modernisation of China's ocean-going transportation industry. In 1971, he was one of the pioneers in the concept of shipboard education and played an influential role in the Semester-at-Sea programme, providing an educational environment for students to gain a taste for international study, travel and life. Subsequently in 1979, he founded The Tung Foundation, with a focus on social, cultural and educational causes.

Introduction

The Establishment

With the passion for creating a world-class heartland of maritime studies, education and consultancy in the Asian region, the Department of Logistics and Maritime Studies (LMS) at The Hong Kong Polytechnic University (PolyU) established the International Centre for Maritime Studies (ICMS) in 2005.

The first of its kind in Hong Kong, ICMS is a self-financed centre developed under PolyU's Area of Strategic Development (ASD) Scheme.

The founding of the Centre also underlines the determination of PolyU and the Department to play an essential role in supporting China's 11th Five-Year Plan which has identified logistics as a major strategic direction of the national economy and its commitment to the development of three major logistics and portal regions (i.e. Pearl River Delta, Yangzi River Delta, and Bo-Hai Gulf). At the same time, the Centre strives to support Hong Kong in reinforcing its role as a world-renowned international maritime Centre.

Since its establishment, the Centre has actively conducted various activities in the well-defined strategic areas, including research, teaching and consultancy, with encouraging results being accomplished.



In appreciation of a pledge of HK\$10 million from The Tung Foundation, the Centre was named after the late Mr C.Y. Tung as the **C.Y. Tung International Centre for Maritime Studies (董浩雲國際海事研究中心)**. The naming and inauguration ceremony of the Centre was held on 9 March 2009.

With the generous donation from The Tung Foundation, C.Y. Tung ICMS will undertake further expansion and gear towards providing maritime resources and support to the Department's students, academics, industrial partners and the maritime community as a whole.





Our Mission

To become a **world-class centre for maritime studies, education and consultancy**

By

- Providing quality and comprehensive *maritime education* for Hong Kong, the Chinese mainland and Asia
- Engaging in *application-oriented research* in shipping, maritime and supply chain logistics
- Conducting *professional training and consulting activities* in the field of shipping and supply chain logistics from both management and economic perspectives; as well as promoting and strengthening PolyU's relationship with the maritime community.



Our Structure & Organisation

C.Y. Tung ICMS is governed by the Steering Committee which serves to:

- Provide guidance and advice on the direction for its future development;
- Monitor and evaluate the activities and performance of the Centre's operation; and
- Provide advice on the resource engagement of the Centre

Steering Committee



Members of Steering Committee:

(from left) Prof. Judy Tsui, Mrs Alice King, Mr Alexander Tzang, Dr Chee-Chen Tung, Mr Andy Tung (from September 2009 onwards), Mr Alan Tung and Prof. John Liu

Membership 2008/2009

Chairman Dr Chee-Chen Tung, SBS, JP 董建成博士 SBS 太平紳士
(Donor Representative, The Tung Foundation)

Mrs Alice King 金董建平夫人
(Donor Representative, The Tung Foundation)

Mr Alan Tung 董立新先生
(Donor Representative, The Tung Foundation)

Mr Alexander Tzang 曾慶忠先生
(Deputy President, PolyU)

Prof. Judy Tsui 徐林倩麗教授
(Associate Vice President; Dean, Faculty of Business; Director, Graduate School of Business; and Chair Professor of Accounting, PolyU)

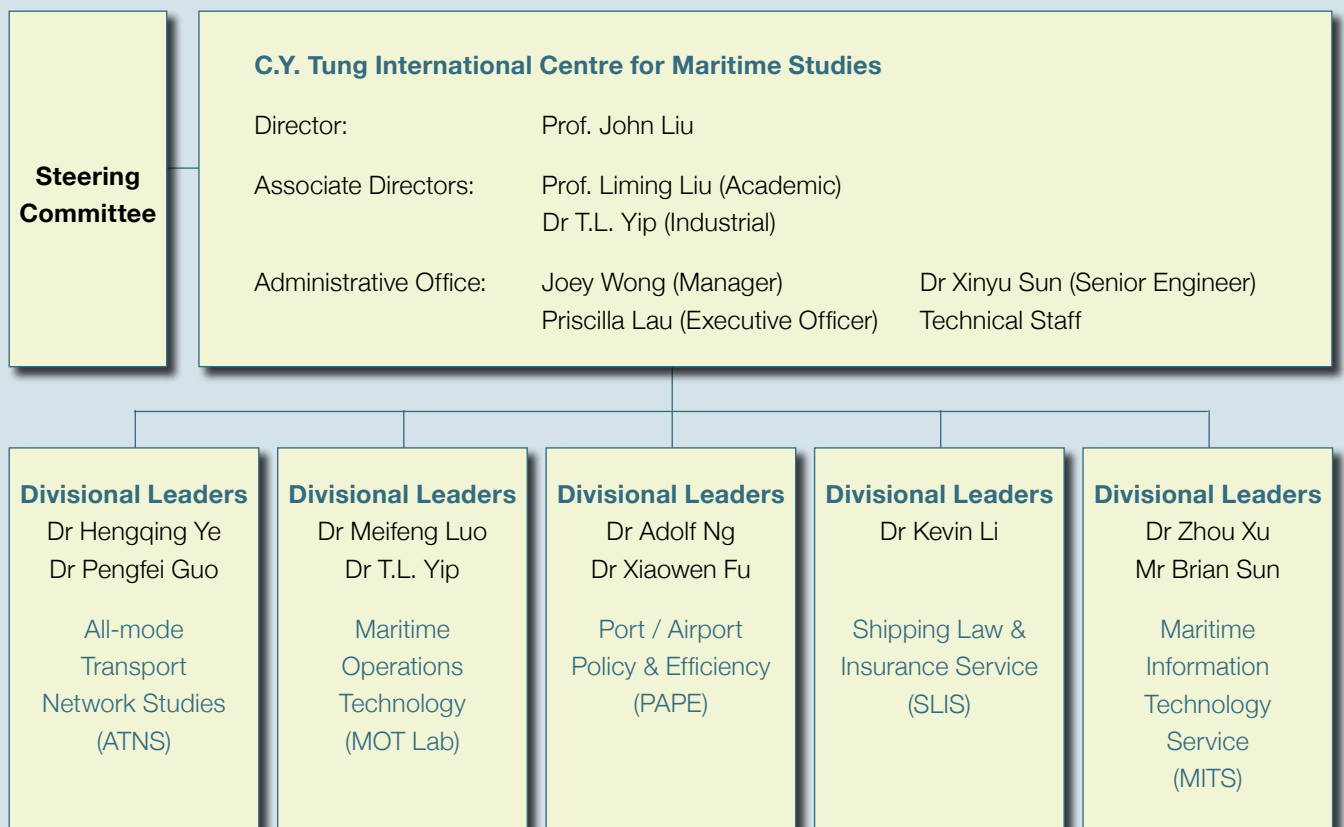
Prof. John Liu 劉建華教授
(Director of C.Y. Tung ICMS; Chair Professor of Maritime Studies; and Head of LMS, PolyU)

Organisational Structure

The Director oversees the strategic development of the Centre, with the support of academic staff and research students from LMS to cover research and teaching areas.

The operation of the Centre has become more structured over time. Prof. Liming Liu and Dr TL Yip, Associate Directors of the Centre, are responsible for two key frontiers respectively: 1) academic and research initiatives; and 2) industrial collaboration, consultancy and training.

A Senior Engineer has been appointed to work on research projects and funding tenders, while a Manager and an Executive Officer are in charge of administrative operations, marketing activities and event organisation in the Centre.



Teaching and Learning

To augment the teaching activities of LMS, the Centre has set up three maritime simulation and IT laboratories serving the needs of LMS students.

During the year in review, the Centre continued to support LMS in the provision of undergraduate programmes, including the Bachelor of Business Administration (Honours) in International Shipping and Transport Logistics and the Higher Diploma in International Transport Logistics. The lectures and tutorials of some courses were conducted in the laboratories.

Courses Conducted in the Laboratories	Total No. of Sessions
Marine Navigation and Meteorology (LGT3022)	80
Marine Navigation and Meteorology (LGT3522)	
Navigation and Shipboard Communication (LGT3504)	
Navigation and Communication Systems (LGT3004)	

Marine Simulation Laboratory

The laboratory, equipped with the technology to project realistic visuals on plasma display and a set of ship-handling simulator comprising a wide range of navigational controls, aims to create a virtual marine environment for ship handling training, manoeuvre rehearsal, as well as ship performance and operational assessment.



GMDSS Simulation Laboratory

The laboratory is equipped with Poseidon Global Maritime Distress and Safety System (GMDSS) simulation software which enables students to acquire a broad concept of navigation and communication systems that can be applied to the effective management of a vessel.



Maritime Information Technology Laboratory

The IT laboratory, opened to LMS teachers and students, provides computer facilities as well as maritime and logistics related databases to enhance users' computer literacy and knowledge of maritime research methodology and information technology.



Quality Research

With a strategic emphasis on innovative research, C.Y. Tung ICMS has been supporting research initiatives sponsored by various funding schemes, attaining a strong research portfolio in both academic and applied research in shipping and ports logistics as well as marine environment that address commercial, technological and public policy research needs.

Research Focus

- Port/airport and transport policy research
- Marine risk and insurance
- Maritime and logistics environment protection
- Maritime and integrated transport systems
- Maritime law and legal service

Research Initiatives

In the reporting year, an array of ongoing research projects were initiated under the auspices of LMS and the Centre.

Port Benchmarking Project

As port competitiveness is vital to the entire maritime industry, the Centre conducted a Port Benchmarking Project, focusing on the study of the port productivity at major container ports in the world. The project aimed to identify the major determinants affecting shippers' choices among ports as well as the best practices to improve port efficiency.

Data were collected from ports around the world to build discrete choice models to compare port performances under different policy scenarios. The results from this project will serve as a foundation for a port to devise appropriate regulatory policies.



Project Leader: Prof. John Liu

Members: Dr Xinyu Sun

Dr Jia Yan (Washington State University)

Dr T.L. Yip

Niche Areas Development

Amongst the research initiatives, projects with a high potential to reach a standard of excellence on a regional or international basis are established as Niche Areas funded by the Areas of Excellence Committee (AoEC) of PolyU.

Ongoing projects supported by Niche Areas Funding are listed below:

Project Title	Principal Investigator	Funds HK\$
Consortium of Shipping and Maritime Studies (CSMS): Management and Service	Prof. John Liu	12 M
<ul style="list-style-type: none"> Regional Container Cargo Equilibrium Analysis and Forecasting: How Hong Kong Prospers with a Sub-40% Market Share 	Prof. Liming Liu	
<ul style="list-style-type: none"> Regional Multi-mode Container Flow Management: Models and Policy Development 	Prof. Liming Liu	
<ul style="list-style-type: none"> Management of Transportation Service Providers in a Global Organisation 	Dr Meifeng Luo	
<ul style="list-style-type: none"> Homogeneity and Heterogeneity in Port Efficiency Evaluation 	Prof. Hong Yan	
<ul style="list-style-type: none"> Port-Adapted Logistics (PortAL) Index: An Interactive Dynamic Efficiency Assessment System (IDEAS) 	Prof. John Liu	
<ul style="list-style-type: none"> Port Policy on Ship Inspection 	Dr Kevin Li	
<ul style="list-style-type: none"> An Integrated Model and Solution Methods for Ship Routing, Berth Assignment, and Transshipments 	Dr Anthony Pang	
<ul style="list-style-type: none"> Berth Allocation with Container Location Considerations 	Prof. Chung-Lun Li	
<ul style="list-style-type: none"> Empty Container Management with Empty Item Repositioning and Item Returns 	Dr Daniel Ng	
<ul style="list-style-type: none"> Customer Service Quality, Satisfaction, and Loyalty in Hong Kong's Shipping Lines 	Dr Andy Yeung	
<ul style="list-style-type: none"> Developing Intermodal Capability as a Strategic Means to Enhance the Regional Competitiveness of Hong Kong as an International Shipping Hub 	Prof. T.C. Edwin Cheng	
<ul style="list-style-type: none"> Managing for Quality and Growth in Chinese Shipping and Logistics Industries: Leadership, Cultural Elements and Operations 	Dr Andy Yeung	
<ul style="list-style-type: none"> Bundling Internet-based Shipping Services and Its Performance Implications 	Prof. T.C. Edwin Cheng	
Equilibrium Performance Benchmarking of Global Ports: Simulation Outlook	Prof. John Liu	1.3M

Externally Funded Projects

Representative projects supported by the General Research Fund of Research Grants Council are listed below.

Research Area / Project Title	Principal Investigator	Funds Schemes HK\$
Bertrand Competition of Container Ports in Growing Market with Lumpy Investment	Dr Meifeng Luo	0.4M
Premium Calls in Marine Mutual Insurance under Impulse Disturbance	Prof. John Liu	0.4M
Rational Merits of Contingent Adjustments to Insurance Reserves: A Computational Quasi-Variational-Inequality (QVI) Analysis	Prof. John Liu	0.6M

Maritime Environment Project

One of the highlights in research innovation was the study of the “*Harmful Algae Indexing (HaiDex) System*”, an efficient system to forecast and forewarn the occurrence of large-scale Harmful Algal Bloom (commonly known as red tide). The invention won the Silver Medal at the 36th International Exhibition of Inventions, New Techniques and Products in 2008. The award is a recognition of the research effort made in applying rigorous research to resolve real-world problems.

Principal Investigator: Prof. John Liu



Cross-boundary Research Projects

C.Y. Tung ICMS proactively partnered with academic institutions in the Chinese mainland to promote national collaborations. Key cross-boundary research projects included:



- “*Collaborative Regional Container Flow Management: Models and Systems Development*”, a project conducted with Shanghai Jiaotong University and sponsored by the “National Natural Science Foundation of China” of the People’s Republic of China and the Research Grants Council of Hong Kong.
- Xi’an Jiaotong University has also been an active collaborative partner of C.Y. Tung ICMS on research, industry application and consulting-based projects drawing on the strengths of both parties.

Research-oriented Laboratory

C.Y. Tung ICMS has been working on the establishment of a research-oriented laboratory, *Laboratory of Integrated Transport and Logistics Systems (ITLS Lab)*, which aims to conduct advanced studies in integrated transport and logistics systems and foster innovation in the areas of manufacturing-logistics projects that will build on national and international collaboration.

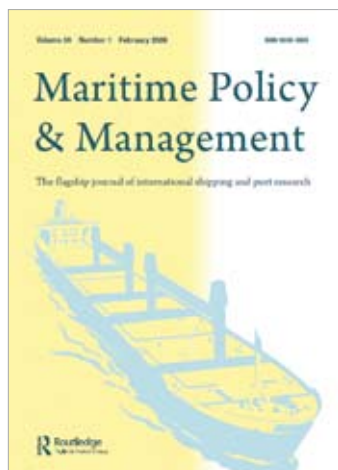
Publication and Research Output

Publication and selected research output in the categories of **Scholarly Books, Monographs and Chapters, Journal Publications** and **Conference Papers / Proceedings** under the auspices of LMS and C.Y. Tung ICMS in the year of July 2008 – June 2009 are set out in the Appendix.

Academic Journal

To promote maritime studies and research locally and internationally, the Centre hosted the Editorial Office of the academic journal “Maritime Policy & Management” (MPM) from January 2009 to provide full support to its operation and development.

MPM is a leading and reputable journal of international shipping and port research, uniquely combining the perspectives of business, economics and management in the maritime and allied industries. It is published six times a year, available in print and online.



The administrative handover to the Centre was smooth, and the first Editorial Board Meeting after the handover was held at the Centre on 25 May 2009, in conjunction with IFSPA 2009.

Editors of MPM: Dr Kevin Li (PolyU)

Dr Heather Leggate McLaughlin (Inlecom, UK)

Volume 36, 2009, 6 issues per year

Print ISSN: 038-8839 Online ISSN: 1464-5254

www.tandf.co.uk/journals/titles/03088839.asp

Published by: Routledge

Collaboration and Consultancy

Industrial Collaboration & Consultancy

Drawing on its expertise and resources, the Centre provided training and consultancy services to companies and organisations in Hong Kong and the Chinese mainland over the past year.

Specialty areas cover:

- Maritime law
- Logistics IT
- Containerisation
- Port benchmarking
- Operations research
- Simulation
- Shipping economics and finance



C.Y. Tung ICMS Won Shenzhen Soft Science Fund

The soft science project **“How to Construct a Modern Industrial System in Shenzhen”** (深圳构建现代产业体系研究) conducted by C.Y. Tung ICMS was awarded the Soft Science Fund by the Shenzhen Bureau of Science Technology and Information in May 2009. A one-year funding of RMB\$300,000 will be made to The Hong Kong Polytechnic University (PolyU) for the project lasting from July 2009 to June 2010.

This is the first time that PolyU has won this funding which signifies the commitment and proven capability of the Centre in both applied research and consultancy, with strengths in real-world application and connection.

The soft science project is led by Prof. John Liu and Dr Xinyu Sun with endeavours to provide consultancy for the Shenzhen Government on issues related to the development of modern industries in Shenzhen and the Pearl River Delta.

Organisation	Courses	Objectives	Attendees
Hong Kong Pilots Association	“Continued Proficiency Development Programme 08/09” (3 subjects)	The CPDP aimed to update pilots of the recent changes in operational parameters and best practices to enhance their competence and professionalism. The Centre provided part of the training programme, focusing on the geographical and local knowledge in harbour, tidal stream and navigational aids, as well as new local or international laws and rules relevant to pilotage services.	20 per class
Mediterranean Shipping Company (HK)	“Executive Education Programme” (8 subjects)	The training aimed to introduce principles, practices and latest developments of shipping. Subjects conducted included cargo operation and containerisation, law of carriage of goods by seas, transport logistics in China, maritime logistics, finance for shipping and logistics, logistics information system as well as warehousing and material handling system.	21 per class

International Conferences & Seminars

C.Y. Tung ICMS participated in various overseas conferences and seminars for the sharing and exchange of field knowledge. Major presentations given include:

- Presentation: “Regulation and Port Productivity Overview of Global Port Benchmarking (A Focus on Hong Kong and South China Region)” at the 3rd APEC Senior Officials’ Meeting on 15-16 Aug 2008, in Peru.
- Joint seminar with the Shanghai Jiao Tong University: “Advanced Research in Logistics and Maritime Transport”, 20 Oct 2008.
- Workshops: “Productivity and Regulation of Global Container Ports: Asia and China Factors” and “Chinese Port Development and Investments”, Dokuz Eylul University, Turkey, 19-21 Jan 2009.
- Invited presentation: “Efficiency Characteristics of Production Frontier under Degenerative Inputs”, Business School, National University of Singapore, 19 Mar 2009.
- Special Interest Session: “Productivity of Global Logistics and Supply Chains: Port-Focal Versus Firm-Focal” with 8 presentations at IAME 2009 Conference, Copenhagen, Denmark, 24-26 Jun 2009.



Visitations

Considering that a strong partnership with other universities and associations is the foundation for establishing a Center with a global network, the Centre received 16 delegations from various regions over the year July 2008 - June 2009.

Period	Visiting Parties
Oct 2008	DocEye Films (Shooting of Documentary “Forgotten Space”), The Netherlands
Nov 2008	Australian Maritime College, Australia
Nov 2008	Maritime Policy & Management, UK (Editorial Team)
Nov 2008	Aberdeen Baptist Lui Ming Choi College, Hong Kong
Dec 2008	Shanghai University, China
Jan 2009	Dalian Maritime University, China
Jan 2009	The Chartered Institute of Logistics and the Transport in Hong Kong, Hong Kong
Feb 2009	Shanghai Jiao Tong University, China
Mar 2009	Old Dominion University, USA
Mar 2009	University of Macau, Macau
Mar 2009	Xi’an Jiaotong University, China
Mar 2009	Malaysia Institute of Transport of University Teknologi MARA (MITRANS), Malaysia
Mar 2009	Zhejiang International Maritime College, China
Apr 2009	DocEye Films (Shooting of Documentary “Forgotten Space”), The Netherlands
Apr 2009	Xi’an Jiaotong University, China
Jun 2009	Guangzhou University, China
Jun 2009	The Research Grants Council, Hong Kong

Activity Highlights

Naming & Opening Ceremony of C.Y. Tung ICMS

The Opening Ceremony of the renovated C.Y. Tung ICMS was held on 9 March 2009. In recognition of the generous donation of HK\$10 million from The Tung Foundation, PolyU announced at the ceremony the renaming of the Centre in honour of the late shipping magnate Mr C.Y. Tung.

More than 80 distinguished guests attended the ceremony, including representatives from The Tung Foundation, government officials, business leaders and corporate executives. Amongst them were Ms Eva Cheng (Secretary for Transport and Housing, Transport and Housing Bureau), Miss Janice Tse (Deputy Secretary for Transport & Housing (Transport), Transport & Housing Bureau), Mr Roger Tupper (Director of Marine, Marine Department), Dr Fong Yun-Wah, Mr David Koo and Mr M.H. Liang.



The event was officiated by (from left) Prof. Timothy W. Tong, PolyU President; Dr Chee-Chen Tung, Donor Representative; and Mr Victor Lo Chung-Wing, PolyU Council Chairman.



International Forum on Shipping, Ports and Airports (IFSPA) 2009

The **3rd IFSPA**, an annual international event dedicated to maritime, aviation and logistics research, was held from 24 to 27 May 2009.

The Conference this year, themed “**Post-Financial Tsunami: The Way Forward for Shipping, Transport and International Trade**”, provided a timely platform for participants to share their views on a wide range of issues and to thrash out solutions for coping with changes and challenges facing the industries.



Keynote Speakers, Sponsors and Officiating Guests (first row, sixth from left) Dr Tung Chee-Chen; Prof. Judy Tsui; the Hon. Miriam Lau Kin-Yee, Legislative Councillor; Prof. Suleyman Demokan, PolyU Vice President, Academic Development; and (second row, fourth on right) Mr Roger Tupper, Director of Marine, Marine Department, HKSAR, at Opening Ceremony.

IFSPA 2009 received an overwhelming response. Some highlights include:

- Received over 80 papers and presentations, (co-)authored by more than 100 scholars.
- Attracted about 200 participants from 17 countries and territories.
- Supported by academies and industries, with the presence of 15 Keynote Speakers and 17 Honorary Guests from around the world.
- Scheduled with 1 Industrial Forum, 3 Keynote Sessions and 16 Parallel Sessions.
- Hosted 2 Special Sessions:
 - “*Dry Port Development in Asia and Other Regions: Theory and Practice*” by the United Nations Economic and Social Commission for Asia and the Pacific.
 - “*Logistics and Supply Chain Modeling Research*” by PolyU’s Logistics Research Centre.
- Concluded by a Harbour Tour as arranged by the Marine Department to give participants an overview of Hong Kong’s port activities.
- Issued a 600-page Conference Proceedings with 50 papers after the event.
- To publish 2 Special Issues dedicated to selected outstanding papers in 2 prestigious journals: “*Transportation Journal*” and “*Research in Transportation Economics*”.



Documentary Filmed at C.Y. Tung ICMS

To support Doc.Eye Film (a production company in The Netherlands) in producing the Documentary “Forgotten Space”, C.Y. Tung ICMS received the shooting crew on 6 April 2009.

The film aims to feature sea lanes and the impact of containerisation in world trade - the triumphal progress of container-transport logistics and how the cargo container had transformed the shipping industry by the 1970s, paving the way for the global factory.

In view of the unique position of PolyU in maritime studies, the crew chose C.Y. Tung ICMS as one of the filming scenes. The shooting included a camera interview with the Centre Director, Prof. John Liu, followed by taking shots at the Centre’s Marine Simulation Laboratory to visualise a container ship in motion through a virtual port.

The Documentary is expected to be completed by the end of 2009 and make its on-air debut on a Holland TV station, followed by broadcasts in Austria and other regions including the Chinese mainland.



Launch of Revamped Website

To get more connected with academics and industries, the Centre launched its revamped website in February 2009.

The revamped website has undergone a face lift and now provides more up-to-date information of the Centre, including its development and research projects. Latest findings and reports of major projects like “Port Benchmarking” and “TEU Forecasts” have also been posted.

As recorded in Google Analytics, over the past year, visitors to the website came from 38 countries and territories, including HK, Chinese mainland, US, India, Singapore, Australia, UK, France and Canada.



Appendix —

Publication and Selected Research Output in 2008-09 (July 2008 to June 2009)

- 1) During the reporting year, the “Proceedings of International Forum on Shipping, Ports and Airports (IFSPA 2008)” (ISBN: 978-962-367-632-8) was released in November 2008. The conference was jointly organised by the Department of Logistics and Maritime Studies and C.Y. Tung ICMS.
- 2) Selected research output under auspices of the Department of Logistics and Maritime Studies and C.Y. Tung ICMS are listed out as follows:

Scholarly Books, Monographs and Chapters

Ng, K.Y.A., *Port Competition: The Case of North Europe*. 1st ed. VDM Aktiengesellschaft & Co. KG, Saarbrücken, Germany, ISBN: 978-3-63916-776-5, 368 pp. (2009).

Ng, K.Y.A. and **Gujar, G.C.**, “Port security in Asia”. In Wayne K. Talley, ed., *Maritime Safety, Security and Piracy*, Informa, London, ISBN: 978-1-84311-767-4, pp. 257 - 278 (2008).

Yip, T.L., “Port ship accidents and risks”. In Wayne K. Talley, ed., *Maritime Safety, Security and Piracy*, Informa, London, ISBN: 978-1-84311-767-4, pp. 169 - 194 (2008).

Journal Publications

Guo, P. and Zipkin, P., “The effects of the availability of waiting-time information on a balking queue”. *European Journal of Operational Research*, Vol. 198, pp. 199 - 209 (2009).

Guo, P. and Zipkin, P., “The impacts of customers’ delay-risk sensitivities on a queue with balking”. *Probability in the Engineering and Information Sciences*, Vol. 23, pp. 409 - 432 (2009).

Li, K.X., “Maritime logistics in Asia”. *Maritime Policy & Management*, Vol. 35, No. 1, pp. 1 - 3 (2008).

Li, K.X. and Ingram, C.W.M., “Carriage of goods by sea under the Vietnam maritime code 2005: a comparative study”. *Journal of International Maritime Law*, Vol. 15, No. 2, pp. 178 - 188 (2009).

Li, K.X. and Zheng, H., “Enforcement of law by the port state control (PSC)”. *Maritime Policy & Management*, Vol. 35, No. 1, pp. 61 - 73 (2008).

Yao, D.Q., Yue, X. and **Liu, J.**, “Vertical cost information sharing in a supply chain with value-adding retailers”. *Omega-International Journal of Management Science*, Vol. 36, No. 5, pp. 838 - 851 (2008).

Ng, K.Y.A. and **Gujar, G.C.**, "The spatial characteristics of inland transport hubs: evidences from Southern India". *Journal of Transport Geography*, Vol. 17, No. 5, pp. 346 - 356 (2009).

Ng, K.Y.A. and Kee, J.K.Y., "The optimal ship sizes of container liner feeder vessels in Southeast Asia: a ship operator's perspective". *Maritime Policy and Management*, Vol. 35, No. 4, pp. 353 - 376 (2008).

Panayides, P.M., Maxoulis, C.N., Wang, T.F and **Ng, K.Y.A.**, "A critical analysis of DEA applications to seaport economic efficiency measurement". *Transport Reviews*, Vol. 29, No. 2, pp. 183 - 206 (2009).

Yan, J., **Sun, X.** and **Liu, J.**, "An empirical model to assess container operators' efficiencies and efficiency changes with heterogeneous and time-variant frontiers". *Transportation Research Part B-Methodological*, Vol. 43, No. 1, pp. 172 - 185 (2009).

Lim, Andrew and **Xu, Z.**, "Searching optimal resequencing and feature assignment on an automated assembly line". *Journal of the Operational Research Society*, Vol. 60, No. 3, pp. 361 - 371 (2009).

Yan, H. and Tang, S.L., "Pre-distribution and post-distribution cross-docking operations". *Journal of Transportation Research Part E*, Vol. 45, pp. 843 - 859 (2009).

Yan, H., Tang, S.L. and Yen, G., "Quick response procurement cost control strategy for fabric manufacturing". *International Journal of Production Research*, Vol. 46, No. 17, pp. 4769 - 4784 (2008).

Wei, Q. and **Yan, H.**, "Weak congestion in output additive data envelopment analysis", *Journal of Socio-Economic Planning Sciences*, Vol. 43, pp. 40 - 54 (2009).

Cong, Q., Wang, Y.M. and **Yan, H.**, "Research on the structure of customer satisfaction with service recovery: a perspective of scale development". *Journal of Marketing Science (Chinese)*, Vol. 4, No. 3, pp. 1 - 13 (2008).

Wang, Y.M., Cong, Q. and **Yan, H.**, "An empirical study on the effect of internal marketing on frontline service employees' performance". *Nankai Business Review (Chinese)*, Vol. 6, pp. 28 - 36 (2008).

Wu, J., Liang, L., Yang, F. and **Yan, H.**, "Bargaining game model in the evaluation of decision making units". *Journal of Expert System with Application*, Vol. 36, pp. 4357 - 4362 (2009).

Ang, S.K., Cao, C.X., Parlar, M. and **Ye, H.Q.**, "Two-stage stochastic integer programming model for multi-period sea cargo mix problem". *IEEE Transactions on Systems, Man and Cybernetics*, Vol. 39, No. 2, pp. 460 - 465 (2009).

Lam, Y.W.S. and **Yip, T.L.**, "Hydrographic surveying and mapping for the coastal construction of Hong Kong Disneyland". *Geomatica*, Vol. 62, No. 4, pp. 45 - 51 (2008).

Ng, J.M. and **Yip, T.L.**, "Maritime education in a transdisciplinary world: the case of Hong Kong". *The Asian Journal of Shipping and Logistics*, Vol. 25, No. 1, pp. 69 - 82 (2009).

Zhu, L., "Can the bunkers convention ensure adequate compensation for pollution victims?" *Journal of Maritime Law and Commerce*. Vol. 40, No. 2, pp. 203 - 220 (2009).

Conference Papers / Presentations

Oum, T. and **Fu, X.**, “Effects of airport-airline vertical relationships”. *13th ATRS Conference*, Abu Dhabi, UAE, 27 - 30 June 2009.

Yan, J., **Fu, X.** and Oum, T., “Exploring network effects of point-to-point networks”. *International Association of Maritime Economists (IAME) 2009 Conference*, Copenhagen, Denmark, 24 - 26 June 2009.

Adler, N., **Fu, X.**, Oum, T. and Yu, C., “Impacts of liberalization in the north-east Asian passenger market”. *13th ATRS Conference*, Abu Dhabi, UAE, 27 - 30 June 2009.

Oum, T., Zhang, A. and **Fu, X.**, “Air transport liberalization and its impacts on airline competition and air passenger traffic”. *International Forum on Shipping, Ports and Airports (IFSPA) 2009*, Hong Kong, 24 - 27 May 2009, pp. 371 - 390 (2009).

Li, K.X., Wang, Y. and Min, J., “Strict or relaxed: remedy for duty of disclosure”. *International Forum on Shipping, Ports and Airports (IFSPA) 2009*, Hong Kong, 24 - 27 May 2009, pp. 227 - 242 (2009).

Liu, J. and **Yip, T.L.**, “Regulation and port productivity overview of global port benchmarking”. *APEC Seminar on Best Practices in Regulation and Promotion of Efficiency*, Lima, Peru, 15 - 16 July 2008, pp. 1 - 8 (2008).

Luo, M., Fan, L. and **Liu, L.**, “A dynamic-economic model for container freight market”. *International Association of Maritime Economists (IAME) 2009 Conference*, Copenhagen, Denmark, 24 - 26 June 2009.

Luo, M., **Liu, L.** and Gao, F., “Bertrand competition with capacity expansion”. *International Forum on Shipping, Ports and Airports (IFSPA) 2009*, Hong Kong, 24 - 27 May 2009, pp. 305 - 321 (2009).

Ng, K.Y.A., “An economic analysis on the competitiveness of short sea shipping connecting Eastern and Western Europe”. *Proceedings of the Eighth International Conference on Research and Development in Mechanical Industry (RaDMI)*, Uzice, Serbia, 14 - 17 September 2008.

Ng, K.Y.A., “Maritime security instruments in practice: a critical review of the implementation of ISPS code in the port of Hong Kong”. *International Forum on Shipping, Ports and Airports (IFSPA) 2009*, Hong Kong, 24 - 27 May 2009, pp. 334 - 348 (2009).

Ng, K.Y.A. and **Gujar, G.C.**, “Locational analysis of dry ports: a case study of Southern India”. *Proceedings of the Eighth International Conference on Research and Development in Mechanical Industry (RaDMI)*, Uzice, Serbia, 14 - 17 September 2008.

Ng, K.Y.A. and **Gujar, G.C.**, “The globalization of supply chain services and opportunities for developing economies: evidence from India”. *International Conference on Greater China Supply Chain and Logistics (GCSCSL) 2008*, Taipei, 29 - 30 November 2008.

Ng, K.Y.A., Cetin, I.B. and **Gujar, G.C.**, “Analyzing the locational characteristics of Indian dry ports with application of the centre of gravity model”. *International Association of Maritime Economists (IAME) 2009 Conference*, Copenhagen, Denmark, 24 - 26 June 2009.

Ng, K.Y.A., Koo, A.C. and Pallis, A.A., "Professionalization of the maritime industries and the growth of postgraduate programmes in maritime studies: a survey of student perceptions". *International Association of Maritime Economists (IAME) 2009 Conference*, Copenhagen, Denmark, 24 - 26 June 2009.

Ng, K.Y.A., Tongzon, J.L. and **Gujar, G.C.**, "The impacts of government policies on the performance and efficiency of dry ports: the case of India". *International Association of Maritime Economists (IAME) 2009 Conference*, Copenhagen, Denmark, 24 - 26 June 2009.

Sanchez, R.J., **Ng, K.Y.A.** and Garcia-Alonso, L., "Assessing the attractiveness of ports: the perspective from service suppliers". *International Association of Maritime Economists (IAME) 2009 Conference*, Copenhagen, Denmark, 24 - 26 June 2009.

Liang, D., Li, G., Gao, J., Sun, L. and **Sun, X.**, "The effect of risk aversion on manufacturer promotion in a two-stage supply chain". *International Forum on Shipping, Ports and Airports (IFSPA) 2009*, Hong Kong, 24 - 27 May 2009, pp. 243 - 252 (2009).

Pang, K.W., **Xu, Z.**, and Li, C.L., "A pickup and delivery problem with service time clash avoidance constraint". *Proceedings of the Second International Workshop on Successful Strategies in Supply Chain Management*, Hong Kong, 8 - 9 January 2009, pp. 253 - 255 (2009).

Lim, A., Qin, H., Xu, J. and **Xu, Z.**, "Random move tabu search for freight proportion allocation problem". *20th IEEE International Conference on Tools with Artificial Intelligence*, Dayton, Ohio, USA, 3 - 5 November 2008.

Pang, K.W., Li, C.L. and **Xu, Z.**, "Ship routing problem with time clash avoidance constraints". *Toronto' 09 CORS-INFORMS International*, Toronto, Canada, 14 - 17 June 2009.

Yip, T.L., **Sun, X.** and **Liu, J.**, "Group competition of global ports". *International Association of Maritime Economists (IAME) 2009 Conference*, Copenhagen, Denmark, 24 - 26 June 2009, pp. 1 - 12 (2009).

Cheung, S.M.S. and **Yip, T.L.**, "Analysis on port-city growths in China". *International Forum on Shipping, Ports and Airports (IFSPA) 2009*, Hong Kong, 24 - 27 May 2009, pp. 47 - 53 (2009).

Lam, Y.W.S. and **Yip, T.L.**, "Integrated marine information system for port utility management and safety". *The First International Conference on Utility Management and Safety*, Hong Kong, 1 - 4 March 2009, pp. 86 - 94 (2009).

Ng, J.M. and **Yip, T.L.**, "Maritime education in a transdisciplinary world: the case of Hong Kong". *International Conference for Launching the Asian Journal of Shipping and Logistics*, Seoul, South Korea, 22 - 23 October 2008, pp. 30 - 42 (2008).

Xu, J.J., **Yip, T.L.**, Hui, E.C.M. and Ng, M.H., "Logistics forecast of port throughput: an econometrics analysis". In K. Amasaka, Y. Matsui, H. Matsuo and M. Morita, eds., *Manufacturing Fundamentals: Necessity and Sufficiency (POM Tokyo)*, Tokyo, Japan, 5 - 8 August 2008, Japanese Operations Management and Strategy Association, pp. 1 - 8 (2008).

Xu, J.J., Fan, L.X. and **Yip, T.L.**, "Foreign flag registration of ships". *International Association of Maritime Economists (IAME) 2009 Conference*, Copenhagen, Denmark, 24 - 26 June 2009, pp. 1 - 12 (2009).

C.Y. Tung International Centre for Maritime Studies

via Department of Logistics and Maritime Studies

M628, Li Ka Shing Tower

The Hong Kong Polytechnic University

Hung Hom, Kowloon, Hong Kong

www.icms.polyu.edu.hk

Email: cyt.icms@polyu.edu.hk